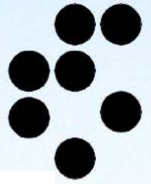
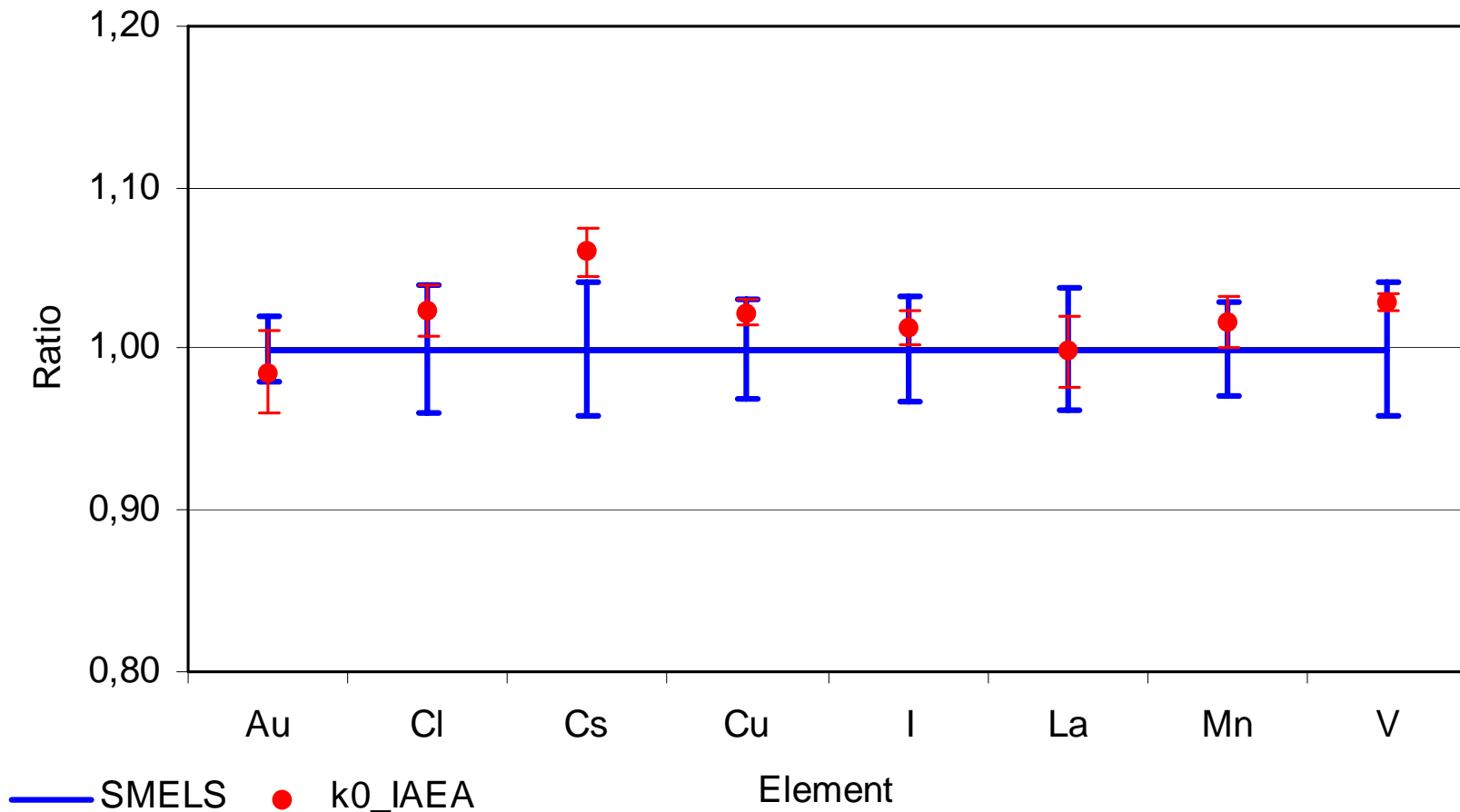


Results for SMELS Types I, II and III obtained by k0_IAEA program at the Jožef Stefan Institute

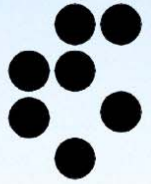
SMELLS Type I



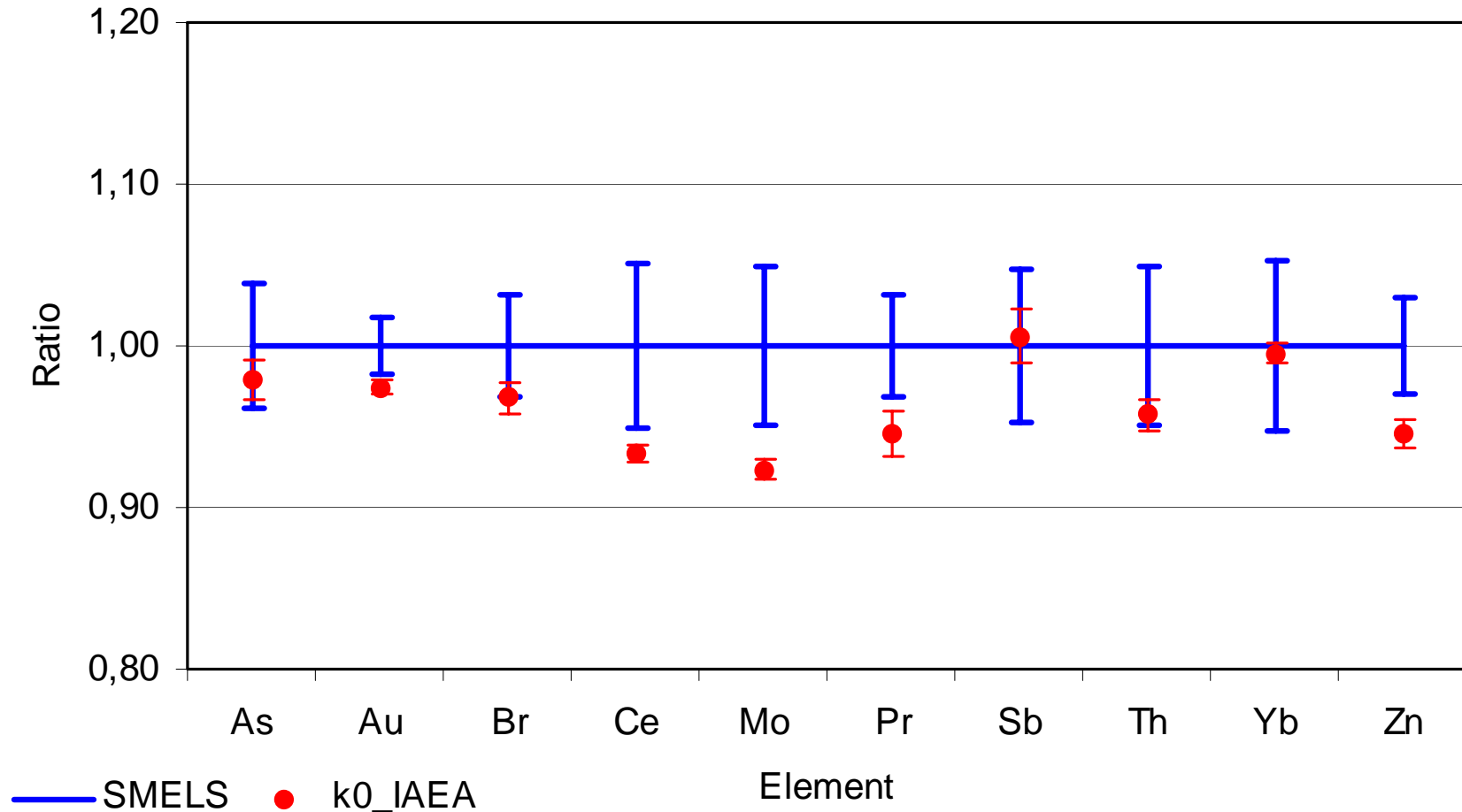
SMELLS Type I (n=3) in the PT of the TRIGA reactor



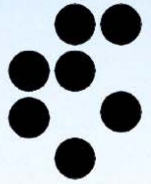
SMELLS Type II



SMELLS Type II (n=3) in the IC40 of the TRIGA reactor



SMELLS Type III



SMELLS Type III (n=3) in the IC40 of the TRIGA reactor

