

**EXFOR Statistics in Numbers and Figures**

V.G. Pronyaev, V. Zerkin  
NDS, IAEA

The statistics for Entries and Sub-entries was prepared using retrieval software developed on PC with EXFOR data loaded in relational database (see WP2000-15 for more details). The year shown in Table and Figures is the year of first input of data into EXFOR.

Table shows the number of entries and sub-entries compiled per year and for reactions with different incident particles: gamma quanta and electrons (g,e), neutrons(N), charged particles (Z), nuclear quantities and spontaneous fission (0). The statistics for 1999 is still not final. Figures show these data in different presentations convenient for analysis.

The following conclusions can be drawn:

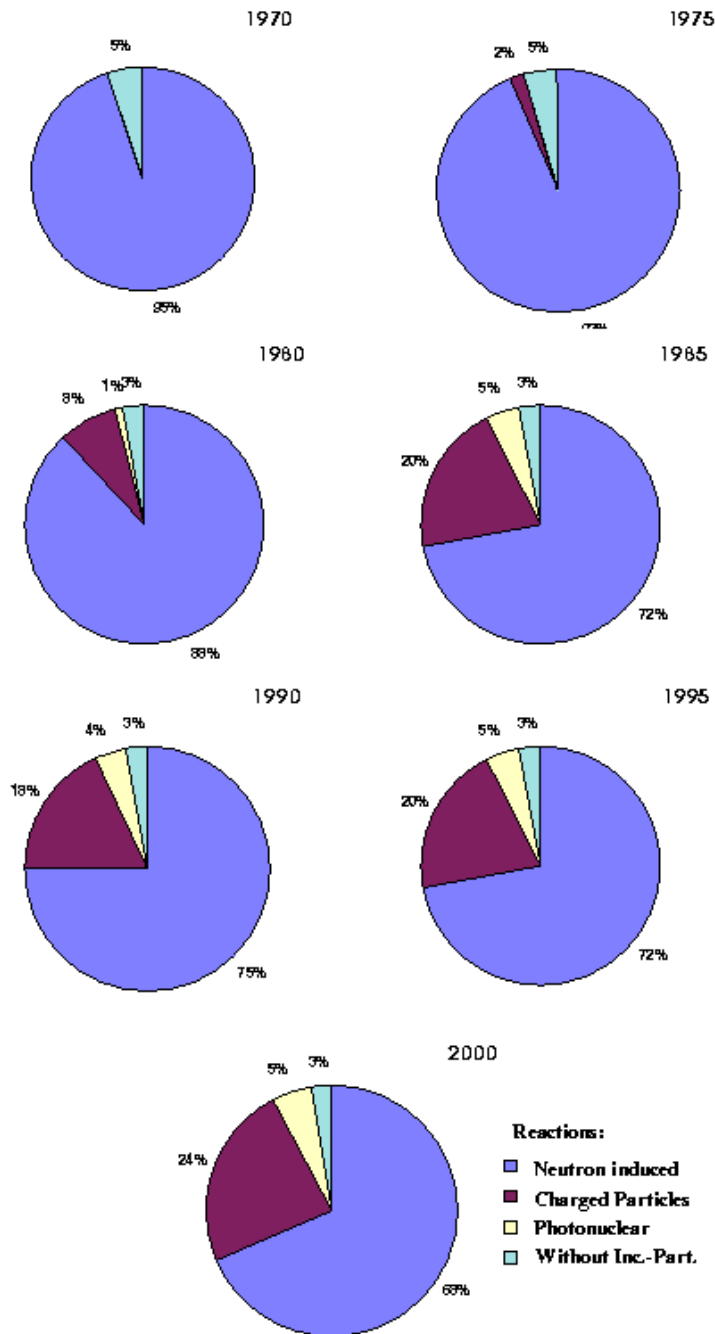
1. The number of entries compiled in last ten years is 260 per year in the average. It is below what had been done in previous ten years, but the number of compiled sub-entries is rather stable at the level 2400 per year for last 20 years.
2. The number of entries and sub-entries with data for charged particle induced reactions had substantial growth after 1993 and constitutes 50 - 80% of all entries in last 6 years.

***Year: g+e, N, Z, 0; Entry, Subentry;***

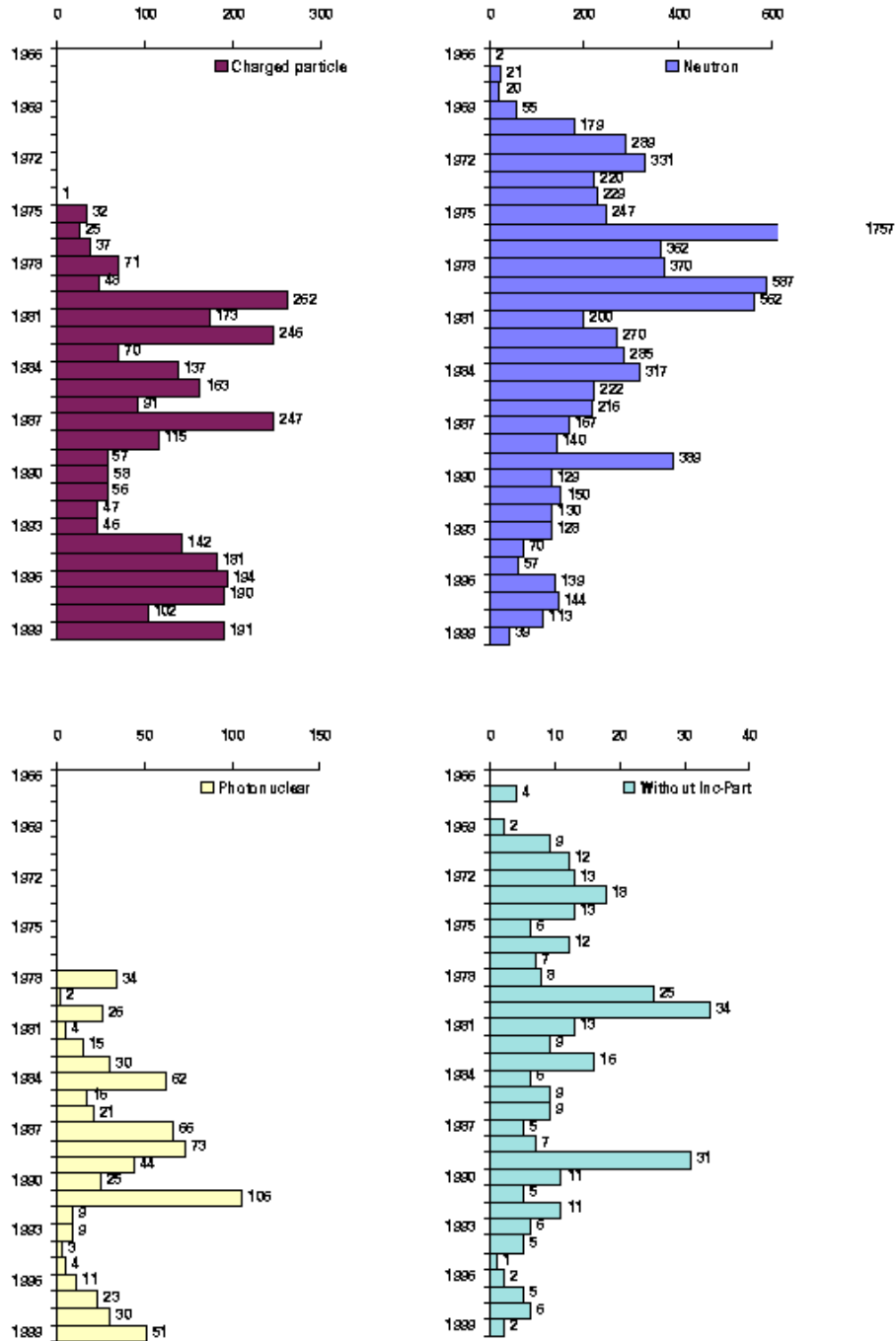
<i>Year</i>	<i>g,e:Ent</i>	<i>g,e:Sub</i>	<i>N:Ent</i>	<i>N:Sub</i>	<i>Z:Ent</i>	<i>Z:Sub</i>	<i>0:Ent</i>	<i>0:Sub</i>	<i>Tot:Ent</i>	<i>Tot:Sub</i>
1961			1	2					1	2
1966			2	9					2	9
1967			21	137			4	8	22	145
1968			20	303					20	303
1969			55	325			2	2	56	327
1970			179	1,246			9	47	180	1,293
1971			289	1,811			12	44	293	1,853
1972			331	2,261			13	49	332	2,305
1973			220	1,840			18	50	223	1,889
1974			229	1,457	1	9	13	33	239	1,499
1975			247	1,542	32	346	6	31	283	1,919
1976			1,757	10,624	25	238	12	38	1,787	10,899
1977			362	1,907	37	366	7	14	403	2,287
1978	34	425	370	2,077	71	278	8	18	479	2,788
1979	2	51	587	3,615	48	326	25	72	642	4,062
1980	26	117	562	3,117	262	1,104	34	144	868	4,474
1981	4	45	200	1,073	173	584	13	41	383	1,743
1982	15	118	270	1,282	246	1,213	9	18	537	2,630
1983	30	185	285	1,478	70	884	16	37	396	2,577
1984	62	373	317	1,792	137	679	6	19	518	2,861
1985	16	89	222	980	163	839	9	22	406	1,922
1986	21	101	216	1,101	91	387	9	21	335	1,610
1987	66	471	167	959	247	1,414	5	15	481	2,853
1988	73	442	140	1,227	115	847	7	19	332	2,519
1989	44	406	389	1,403	57	325	31	59	515	2,188
1990	25	193	129	755	58	541	11	26	222	1,515
1991	106	407	150	589	56	484	5	10	315	1,490
1992	9	36	131	528	47	266	11	33	195	860
1993	9	33	128	566	46	1,169	6	21	188	1,789
1994	3	49	70	274	142	2,260	5	17	219	2,600
1995	4	22	57	330	181	3,136	1	2	243	3,490
1996	11	56	139	686	194	3,240	2	4	346	3,986
1997	23	119	144	830	190	2,111	5	12	361	3,072
1998	30	213	113	887	102	905	6	26	251	2,031
1999	51	246	40	220	191	912	2	5	284	1,383
<b>Total:</b>	<b>664</b>	<b>4,197</b>	<b>8,539</b>	<b>49,233</b>	<b>2,982</b>	<b>24,863</b>	<b>322</b>	<b>957</b>	<b>12,357</b>	<b>79,173</b>

Friday, May 05, 2000

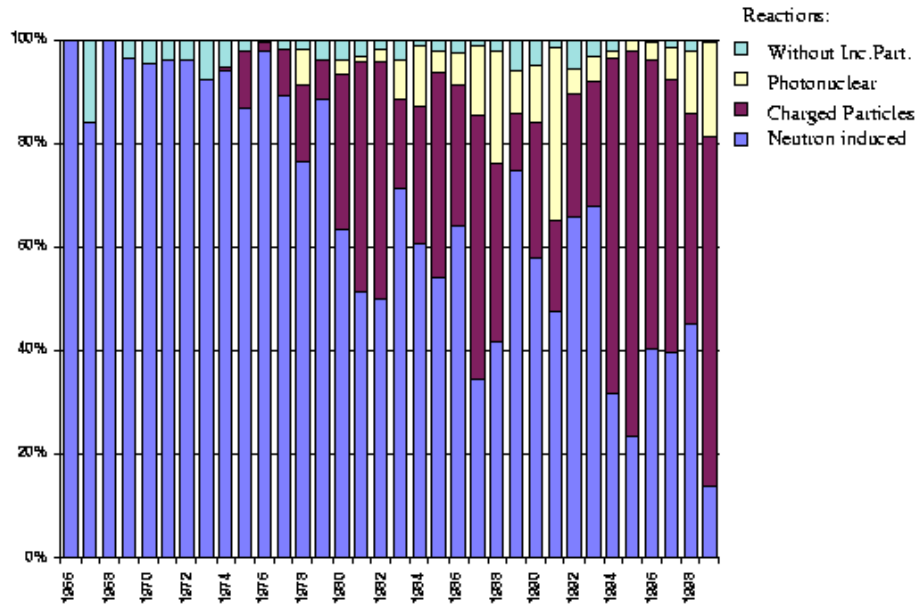
**EXFOR contents: % of Entries with different type of reactions**



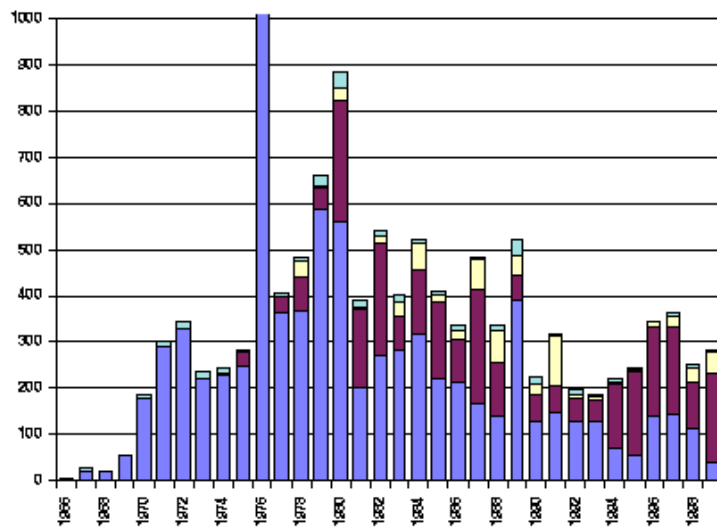
**EXFOR contents: number of Entries with different type of reactions**



**EXFOR input: number of Entries for different type of reactions**



**Amount**



**EXFOR Contents: number of Reactions with different Projectiles**

