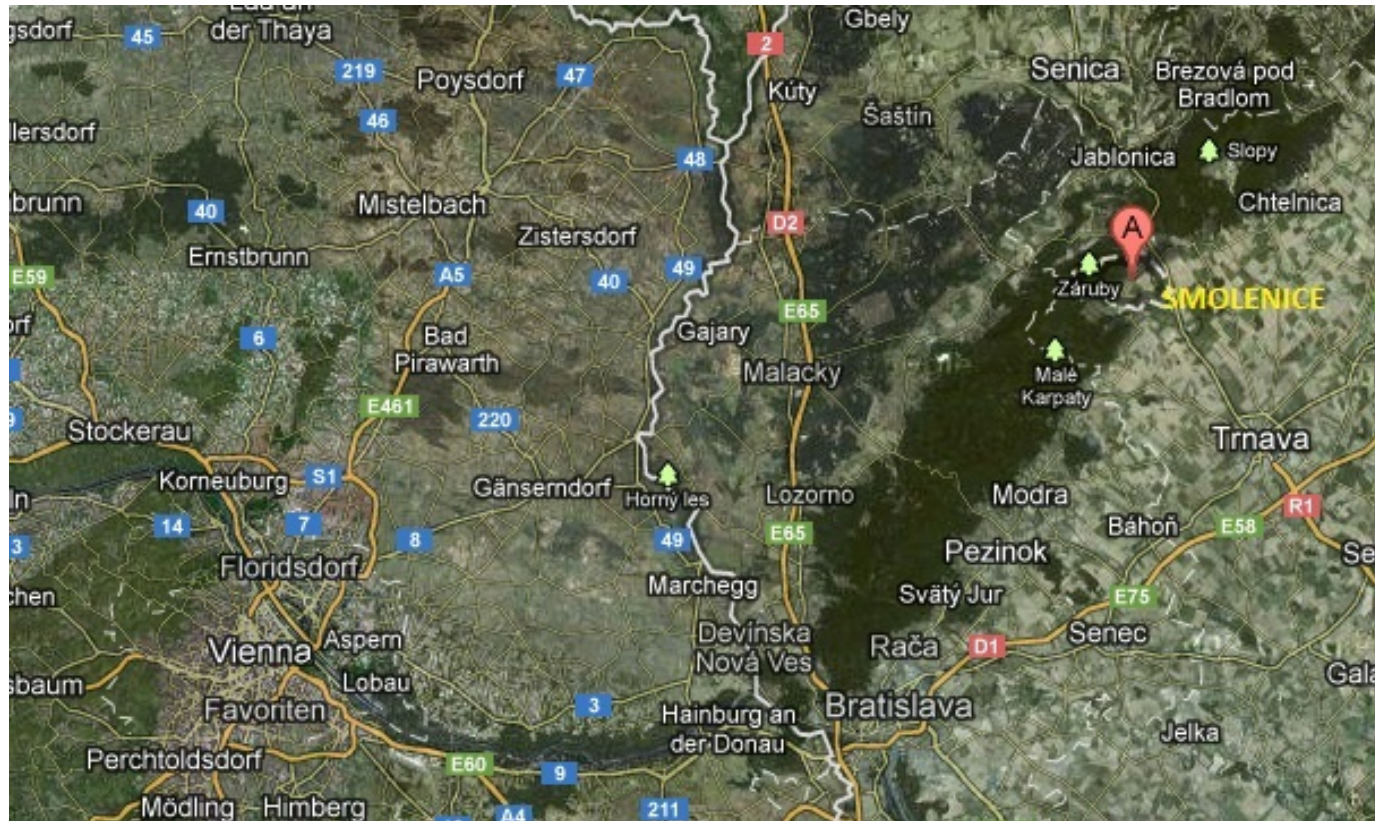


NRDC 2014
Smolenice castle
6.-9. May 2014

Geography



Distance

Vienna Int. airport –Smolenice (shortest) 106 km
(fastest HWY) 136 km

History of Castle

- Determined by geography
- Located In the vicinity of a pass through Small Carpathian Mountains
- Historical facts about settlement of Hallstadt culture since 6 century B.C.
- Original castle built in 15. century
- Palffy family inherited Smolenice (with castle) in 18th century
- Castle destroyed during Rákoczi uprising and Napoleonic wars
- Rebuild in 20th century on order of count Jozef Palffy by the architect Paul Reiter from Bavaria
- Damaged at the end of World War II, later became state property
- Since 1953 castle is the property of Slovak Academy of Sciences and is used as conference center

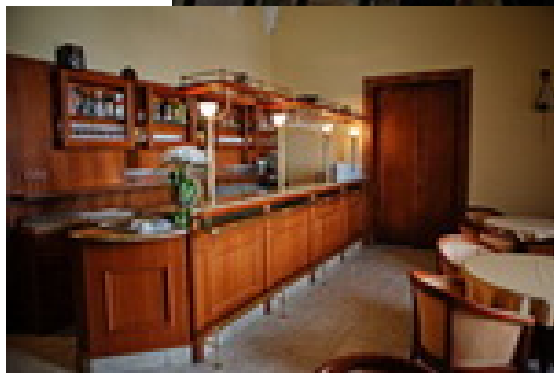
Smolenice castle



Large and small lecture rooms



Dinning room and bar



NRDC 2014 Smolenice

PROs

- Quiet and undisturbed atmosphere
- Friendly service for conference participants
- Bus from Vienna (airport ?) may be organized
- Social events could be organized on the castle or in the neighbourhood
- Enough parking slots available at the castle

CONTRAs

- It is difficult to leave the conference place
- May be, that there will be another small conference at the same time