

Status of New Articles for EXFOR Compilation (A1)

(N. Otsuka, V. Semkova, 2016-05-27)

NRDC 2015 Action1 (All): Give the highest priority to compilation of new articles.

Figure shows delay in compilation (= date of transmission – date of publication) for new articles published in selected journals (covering 62% of all registered articles) and coded as the primary reference in new entries. The averaged delay is **6.3 months** for the articles published in 2015.

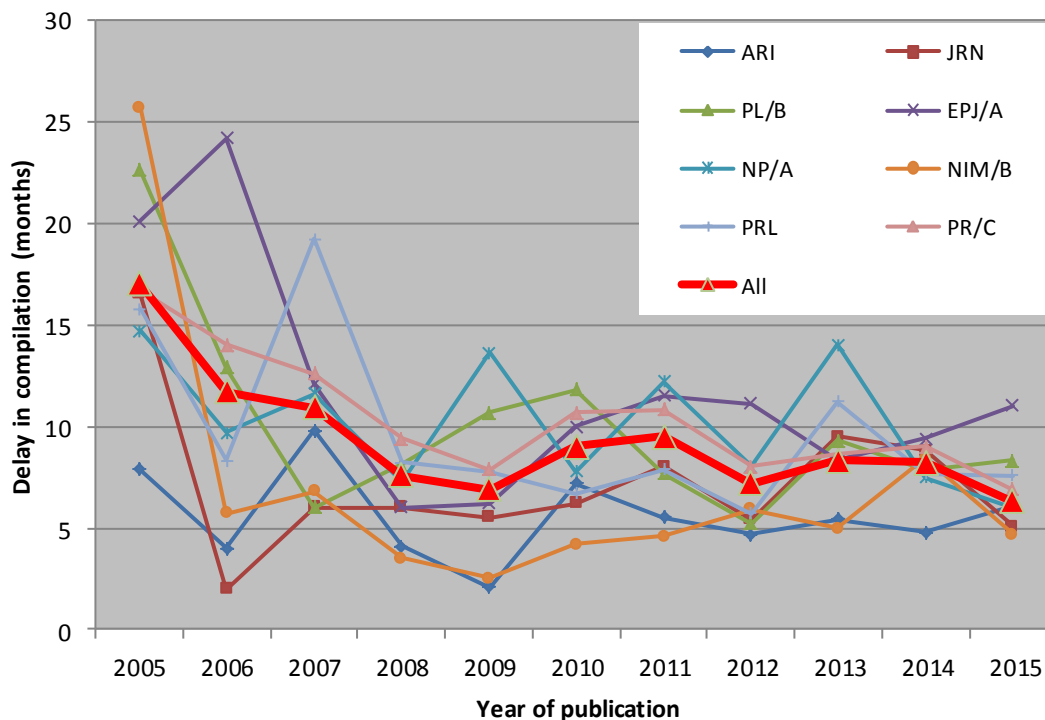


Table shows Number of 2004-2016 articles still missing in EXFOR Master. Articles reporting heavy-ion and photo induced reaction data are excluded. Articles in AIP, EPJ/CS, JP/CS, JAEA-C as well as ND conference articles are also excluded.

pub.	ATOMKI	CDFE	CJD	CNDC	JCPRG	KNDC	NEA DB	NDPCI	NDS	NNDC	UkrNDC	All
Sum	24	0	3	50	43	3	103	25	22	80	1	354
2004	0	0	0	0	4	0	10	0	3	4	0	21
2005	0	0	0	0	0	0	3	0	1	2	0	6
2006	0	0	0	0	1	0	0	0	0	2	0	3
2007	1	0	0	0	4	0	0	0	0	2	0	7
2008	0	0	0	0	0	0	4	0	0	3	0	7
2009	0	0	0	2	0	0	0	0	0	4	0	6
2010	0	0	0	0	4	0	4	1	0	5	0	14
2011	0	0	0	0	2	0	4	0	0	2	0	8
2012	1	0	0	0	7	0	5	0	0	3	0	16
2013	0	0	0	5	2	0	4	0	0	7	0	18
2014	0	0	1	16	5	1	7	1	0	11	0	42
2015	12	0	0	19	8	2	36	17	1	17	1	113
2016	10	0	2	8	6	0	26	6	17	18	0	93

Appendix

List of journals which published 5 or more articles for EXFOR compilation in 2008-2016. All articles registered to the EXFOR Compilation Control System are counted.

Journal	2008	2009	2010	2011	2012	2013	2014	2015	2016	Sum
PR/C	102	117	110	114	133	129	121	102	38	966
NIM/B	31	25	21	20	19	28	22	41	20	227
EPJ/A	3	21	27	19	15	13	18	15	6	137
PRL	11	20	13	10	18	13	21	9	3	118
ARI	18	18	17	9	14	5	17	13	6	117
EPJ/CS	0	0	19	11	11	11	34	16	10	112
NP/A	16	10	30	13	6	7	6	11	6	105
PL/B	10	10	9	11	15	8	13	15	10	101
PAN	16	9	15	13	12	6	14	13	1	99
JRN	3	7	11	11	7	9	21	15	7	91
BAS	9	6	9	14	8	12	13	6	3	80
KPS	3	0	0	68	1	0	2	4	0	78
NDS	0	0	3	1	0	0	66	0	3	73
NIM/A	8	7	8	12	4	10	10	4	2	65
RCA	5	8	5	7	9	10	10	5	3	62
JP/CS	2	0	2	14	16	12	2	7	3	58
JP/G	9	7	8	7	2	2	2	6	2	45
NSE	9	6	3	2	5	1	6	2	4	38
ANE	4	4	1	6	4	6	6	2	1	34
PPN/L	0	2	2	3	3	8	4	6	3	31
IMP/E	6	3	1	9	1	4	0	1	0	25
NST	4	1	5	4	3	1	1	1	1	21
APP/B	1	0	1	0	1	5	3	3	3	17
CPL	1	3	4	4	1	0	1	1	0	15
AE/T	0	3	0	4	2	0	2	0	0	11
JPJ	3	2	1	3	1	1	0	0	0	11
NSTP	0	0	0	5	1	0	5	0	0	11
RM	1	1	4	1	1	2	0	0	0	10
IPC	1	0	2	0	2	2	0	1	1	9
NSTS	7	0	0	0	0	0	0	0	0	7
JEL	0	0	0	0	0	2	0	4	0	6