

Status of New Articles for EXFOR Compilation (A1)

(N. Otsuka, V. Semkova, 2017-05-12)

NRDC 2016 Action1 (All): Give the highest priority to compilation of new articles.

Figure shows delay in compilation (= date of transmission – date of publication) for new articles published in selected journals (covering 64% of all 2006-2016 registered articles) and coded as the primary reference in new entries. The averaged delay is **4.8 months** for the articles published in 2015. The average for all 2006-2016 registered articles is **8.7 months**. (Heavy-ion and photo induced reaction works are excluded).

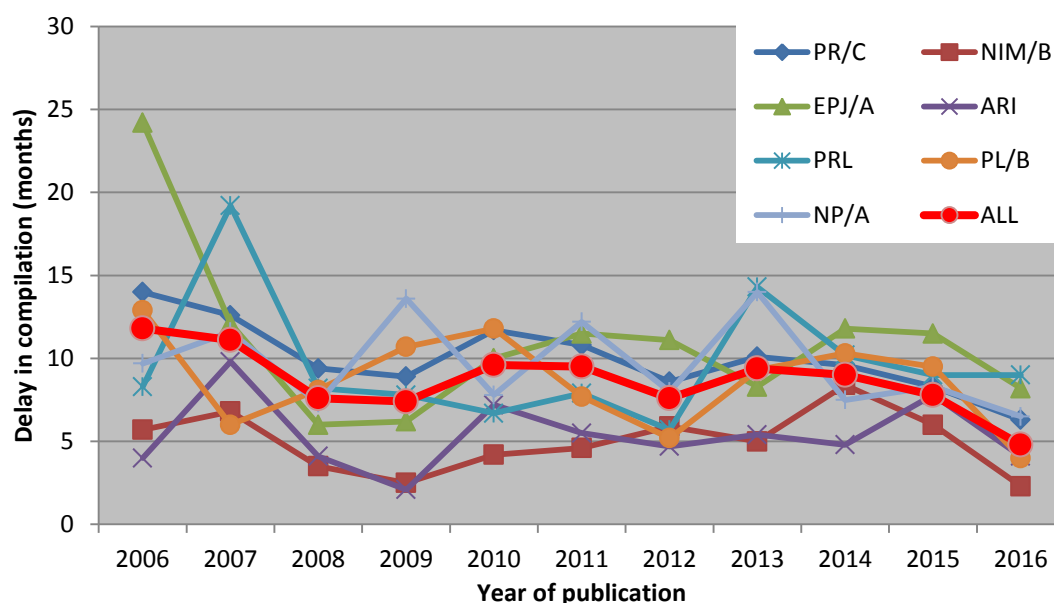


Table shows Number of 2004-2016 articles still missing in EXFOR Master. Articles reporting heavy-ion and photo induced reaction data are excluded. Articles in AIP, EPJ/CS, JP/CS, JAEA-C as well as ND conference articles are also excluded.

	ATOMKI	CDFE	CJD	CNDC	CNPD	JCPRG	KNDC	NDPCI	NDS	NEA DB	NNDC	UkrNDC	All
2004					2	4				9	3		18
2005										3	2		5
2006					1	1						2	4
2007						4					2		6
2008										4	2		6
2009				2								1	3
2010					1	3				4	4		12
2011					1	2			1	6	3		13
2012						6		1		3	2		12
2013				1	1	2		1		3	6		14
2014				12	1	3	1	2		2	5		26
2015	1			17		4		17		22	9		70
2016	3		6	13	1	10	1	14	3	49	31		131
2017	11			4	3	11	4	6	6	18	13		76
Sum	15	0	6	49	11	50	6	41	10	123	85	0	396

Appendix

List of journals which published 5 or more articles for EXFOR compilation in 2009-2017. All articles registered to the EXFOR Compilation Control System are counted.

Journal	2009	2010	2011	2012	2013	2014	2015	2016	2017	Sum
PR/C	117	111	114	132	129	121	103	108	41	976
NIM/B	26	21	20	19	28	22	40	32	10	218
EPJ/A	21	27	19	15	13	17	15	19	2	148
EPJ/CS	0	19	11	11	11	35	16	20	0	123
PRL	20	13	10	18	13	21	9	10	5	119
ARI	18	17	9	14	5	17	13	16	7	116
PL/B	10	9	11	15	8	13	15	18	5	104
NP/A	10	31	13	6	7	6	11	8	5	97
JRN	7	11	11	7	9	21	15	9	4	94
PAN	9	15	13	12	6	14	12	2	3	86
KPS	0	0	68	1	0	2	4	0	1	76
BAS	6	9	14	8	12	12	6	6	0	73
NDS	0	0	1	0	0	67	0	3	0	71
NIM/A	8	8	12	4	10	11	4	5	3	65
JP/CS	0	2	14	17	12	2	9	7	0	63
RCA	7	5	7	9	10	10	5	5	1	59
JP/G	7	8	7	2	2	2	6	3	1	38
PPN/L	2	2	3	3	8	4	6	6	1	35
NSE	6	3	2	5	1	6	2	7	0	32
ANE	4	1	6	4	6	6	2	1	1	31
IMP/E	3	3	11	1	4	1	1	3	1	28
NST	1	5	4	3	1	1	1	1	2	19
APP/B	0	1	0	1	5	4	3	4	0	18
CPL	3	4	4	1	0	1	1	0	0	14
AE/T	3	0	4	2	0	2	0	0	0	11
NSTP	0	0	5	1	0	5	0	0	0	11
IPC	0	2	0	2	2	0	1	2	1	10
RM	1	4	1	1	2	0	0	0	0	9
JPJ	2	1	3	1	1	0	0	0	0	8
JEL	0	0	0	0	2	0	4	2	0	8
PRM	1	2	0	1	1	1	1	1	0	8