

Status of New Articles Compilation (A1)

(N. Otsuka, 2018-04-25)

NRDC 2017 Action1 (All): Give the highest priority to compilation of new articles.

Figure shows delay in compilation (= date of transmission – date of publication) for new articles published in selected journals (covering 64% of all 2006-2016 registered articles) and coded as the primary reference in new entries. The averaged delay is **5.4 months** for the articles published in 2017. The average for all 2007-2017 registered articles is **9.0 months**. (Heavy-ion and photo induced reaction works are excluded).

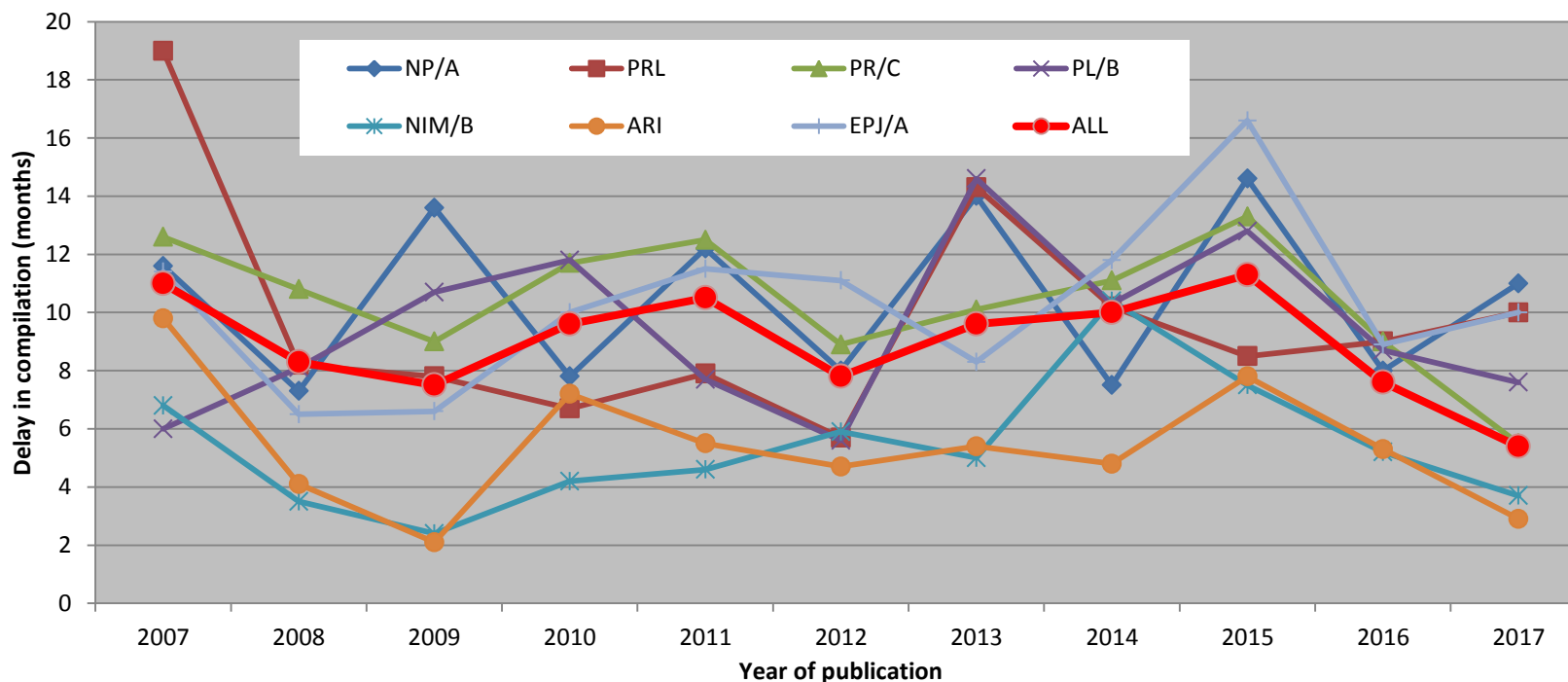


Table shows Number of 2005-2018 articles still missing in EXFOR Master. Articles reporting heavy-ion and photo induced reaction data are excluded. Articles in AIP, EPJ/CS, JP/CS, JAEA-C as well as ND conference articles are also excluded.

	NEADB	NNDC	JCPRG	NDPCI	CNDC	KNDC	NDS	CNPD	UkrNDC	ATOMKI	CJD	CDFE	All
2005	4	2	1										7
2006	3	3	1			-							7
2007	3	2	7			-				1			13
2008	2	1	1										4
2009		1											1
2010	3	5	3		1			3					15
2011	1	3	3				1	1					9
2012	4	5	1					2	2				23
2013	3	7	2										12
2014	2	6	3		7	1							19
2015	1	1	3		4	3							3
2016	2	15	9		3	3					2		52
2017	42	18	23	33	13	1	8	4	4		1	2	158
2018	1	9	6	7	1	6	5	1	1	4	-	-	5
Sum	107	87	72	40	29	23	14	11	7	5	3	2	355

Appendix

List of journals which published 5 or more articles for EXFOR compilation in 2010-2017. All articles registered to the EXFOR Compilation Control System are counted.

Journal	2010	2011	2012	2013	2014	2015	2016	2017	2018	Sum
PR/C	111	114	132	129	121	103	108	126	28	972
NIM/B	21	20	19	28	22	40	32	21	6	209
EPJ/CS	19	11	11	10	35	16	20	86	0	208
EPJ/A	28	19	15	13	17	15	19	12	2	140
ARI	17	9	14	5	17	13	16	15	5	111
PRL	13	10	18	13	21	9	10	13	3	110
PL/B	9	11	16	8	13	15	18	13	4	107
JRN	11	11	7	9	21	15	9	17	1	101
NP/A	31	13	7	7	6	11	8	6	11	100
JP/CS	2	14	17	12	2	9	7	14	9	86
PAN	15	13	13	6	14	12	2	9	0	84
KPS	0	68	1	0	2	4	0	1	0	76
NDS	3	1	0	0	68	0	3	0	0	75
BAS	9	14	8	12	11	6	6	4	0	70
NIM/A	8	12	6	10	11	4	5	7	2	65
RCA	5	7	9	10	10	5	5	6	1	58
PPN/L	2	3	3	8	4	6	6	3	0	35
JP/G	8	7	2	2	2	6	3	4	0	34
NSE	3	2	6	1	6	2	7	4	0	31
ANE	1	6	4	6	6	2	1	1	2	29
IMP/E	3	11	1	4	1	1	3	1	0	25
APP/B	1	0	1	5	4	3	4	4	0	22
NST	5	4	3	1	1	1	1	3	0	19
CPL	4	4	1	0	1	1	0	0	0	11
NSTP	0	5	1	0	5	0	0	0	0	11
JPJ	1	3	1	1	0	0	0	2	2	10
AE/T	0	4	2	0	2	0	0	1	0	9
JEL	0	0	0	2	0	4	2	1	0	9
RM	4	1	1	2	0	0	0	0	0	8
PRM	2	0	1	1	1	1	1	0	0	7