

Center of Nuclear Physical Data

Status report to the Meeting of Nuclear Reaction Data
Centers,
October 8-10, 2007
S.M. Taova

Russian Federal Nuclear Center-VNIIEF

Russia,607190, Sarov, Nizhnij Novgorod region, pr.Mira, 37

- **TRANS.F026**
- **TRANS.F027**
- **TRANS.F028**

72 new entries

14 corrected entries

VNIIEF CNPD

Code ZCHEX for hecking EXOR entries and ZORDER for indexing bz V.McLane, BNL and V.Zerkina, IAEA/NDS are used

EXFOR Editor

Compilation into database Exfor

Version 1.1

VNIIEF CNPD

Thanks to V.Zerkin and S.Dunaeva, IAEA/NDS for ideas, proposals and testing

VNIIEF CNPD

Thanks to V.Zerkin and S.Dunaeva, IAEA/NDS for ideas, proposals and testing

VNIIEF CNPD

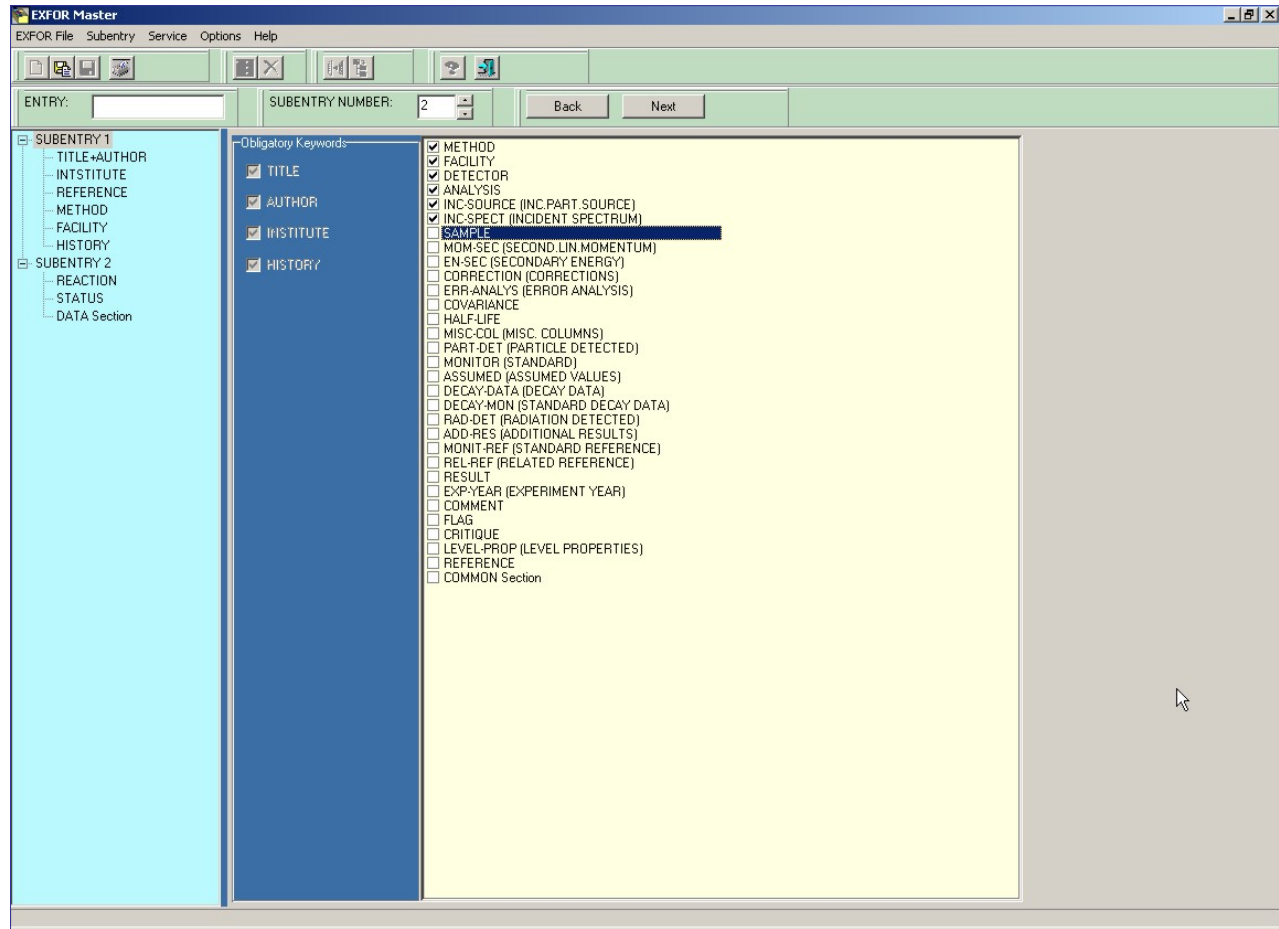
Thanks to V.Zerkin and S.Dunaeva, IAEA/NDS for ideas, proposals and testing

Data digitizing for EXFOR base

EXFOR Digitizer

Copyring 2007
G.Pikulina, S.Taova

EXFOR - MASTER



● **New Features of Data Editor**

- data import from TEXT , WORD and EXCEL files is provided;
- user can paste data from the Clipboard into a table;
- desired data presentation precision can be set when transferring data from a table to EXFOR file;
- insertion of a constant value into a data column can be carried out;
- CHART and SORT modes are included to the Data - Editor;
- user interface of some windows was improved.

Reaction input

Reaction Input [X]

REACTION (8-0-16 (D,N) 9-F-17, PAR, DA)

Compress Clear

Pointer Use

Reaction Field SF1

Target Nucleus
8-0-16

Incident Particle
D - Deuterons

Process
N - Neutrons

Reaction Product
9-F-17

Reaction

Keyword Input Option
 Cursor Position
 End of File
 Current SUBENT
 SUBENTRY-001

Process [X]

Process Code

Process
ABS - Absorption
EL - Elastic scattering
F - Fission
FUS - Total fusion
INL - Inelastic scattering
NDN - Nonelastic (= total minus elastic)
PAI - Pair production
SCT - Total scattering (elastic + inelastic)

Select

Particle Code

Particle
HE2 - He-2
HE3 - He-3
KN - Kaons,negative
KP - Kaons,positive
N - Neutrons
P - Protons
PI - Pions,unspecified
PIO - Pions,neutral

Select

Combinations

P
P+A
P+A+F
P+A+N
P+3A
P+D
P+D+2A

Select

Elements

Li	3	Be	4	B	5	C	6	N	7	O	8	F	9
Na	11	Mg	12	Al	13	Si	14	P	15	S	16	Cl	17
K	19	Ca	20	Sc	21	Ti	22	V	23	Cr	24	Mn	
Cu	29	Zn	30	Ga	31	Ge	32	As	33	Sc	34	Br	
Rb	37	Sr	38	Y	39	Zr	40	Nb	41	Mo	42	Tc	
Ag	47	Cd	48	In	49	Sn	50	Sb	51	Te	52	I	
Cs	55	Ba	56	La	57	Hf	72	Ta	73	W	74	Re	
Au	79	Hg	80	Tl	81	Pb	82	Bi	83	Po	84	At	
Fr	87	Ra	88	Ac	89	Ku	104	Ns	105		106		
Ce	58	Pr	59	Nd	60	Pm	61	Sm	62	Eu	63	Gd	64
Th	90	Pa	91	U	92	Np	93	Pu	94	Am	95	Cm	96
													97

Isotopes

2-HE-5
2-HE-6
2-HE-7
2-HE-8

Find SF6 Parameter [X]

Text to Find

Find

AP/DA
ARE
D
DA
DA/CRL
DA/DA
DA/DA/DE
DA/DA/DE/DE
DA/DE
DA/DE/DE
DA/DP
DA/KE
DA/RAT

Select

Cancel

Copyright 2007 G.Pikulina, S. Taova

7